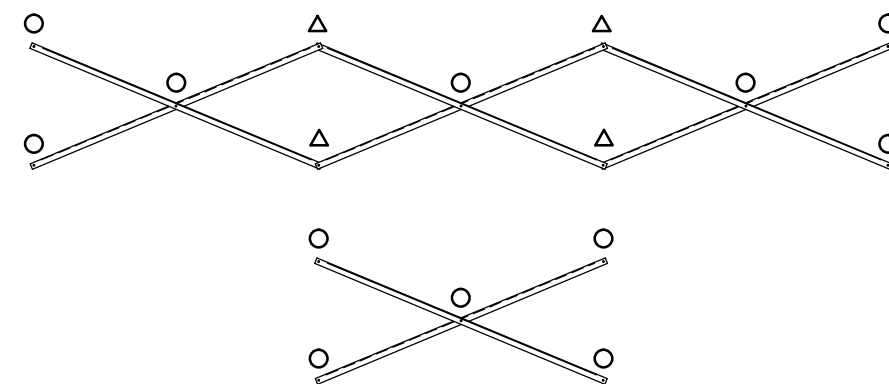


SEATING & FRAMING PLAN

1/4" = 1'-0"

42 NET SEATS @ 18" PER SEAT

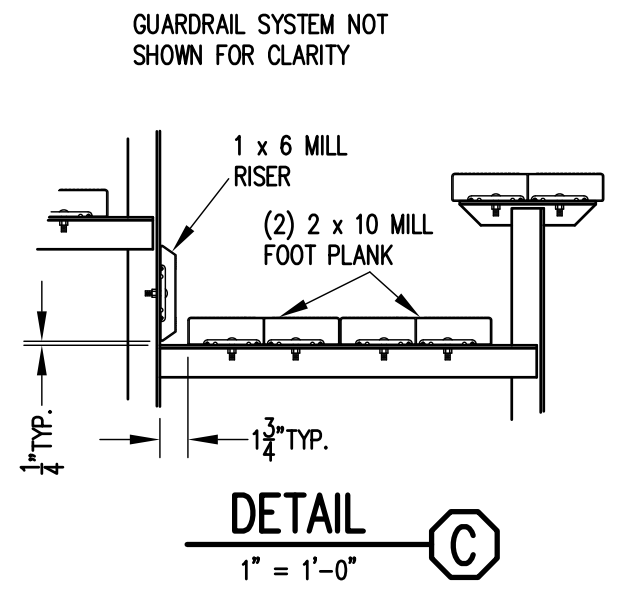
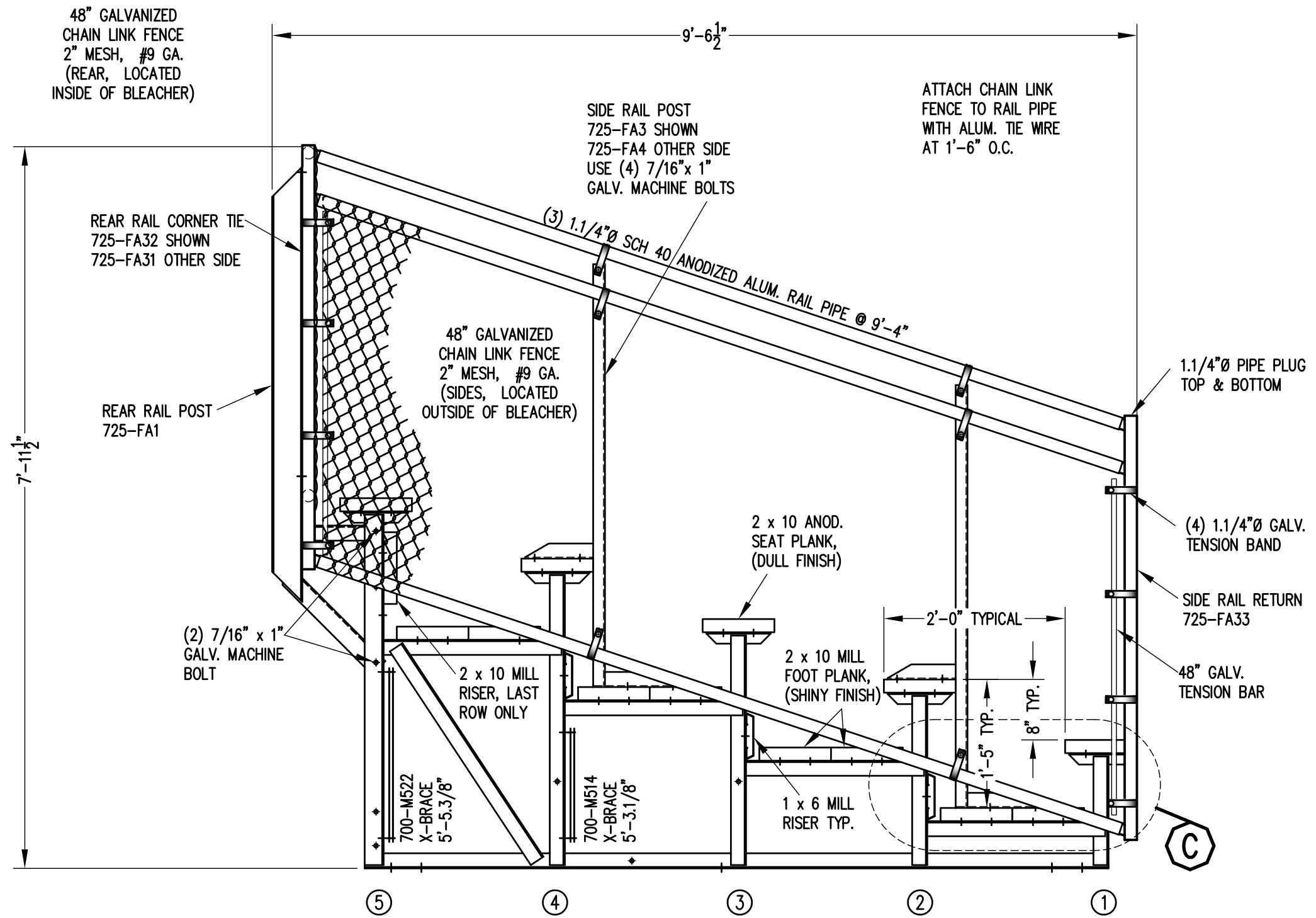


X-BRACE DETAIL

N.T.S.

- 7/16" X 1" GALV. MACH. BOLT
- △ 7/16" X 1.1/2" GALV. MACH. BOLT

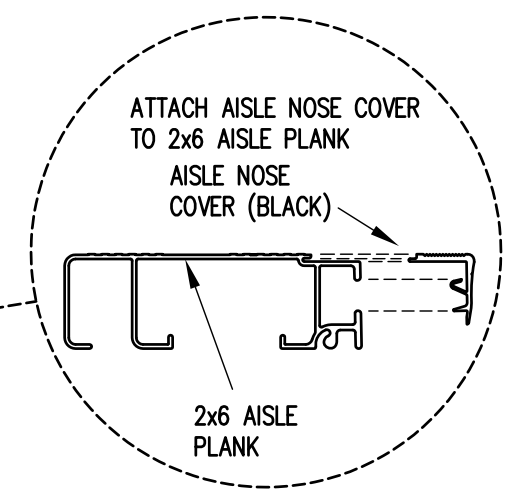
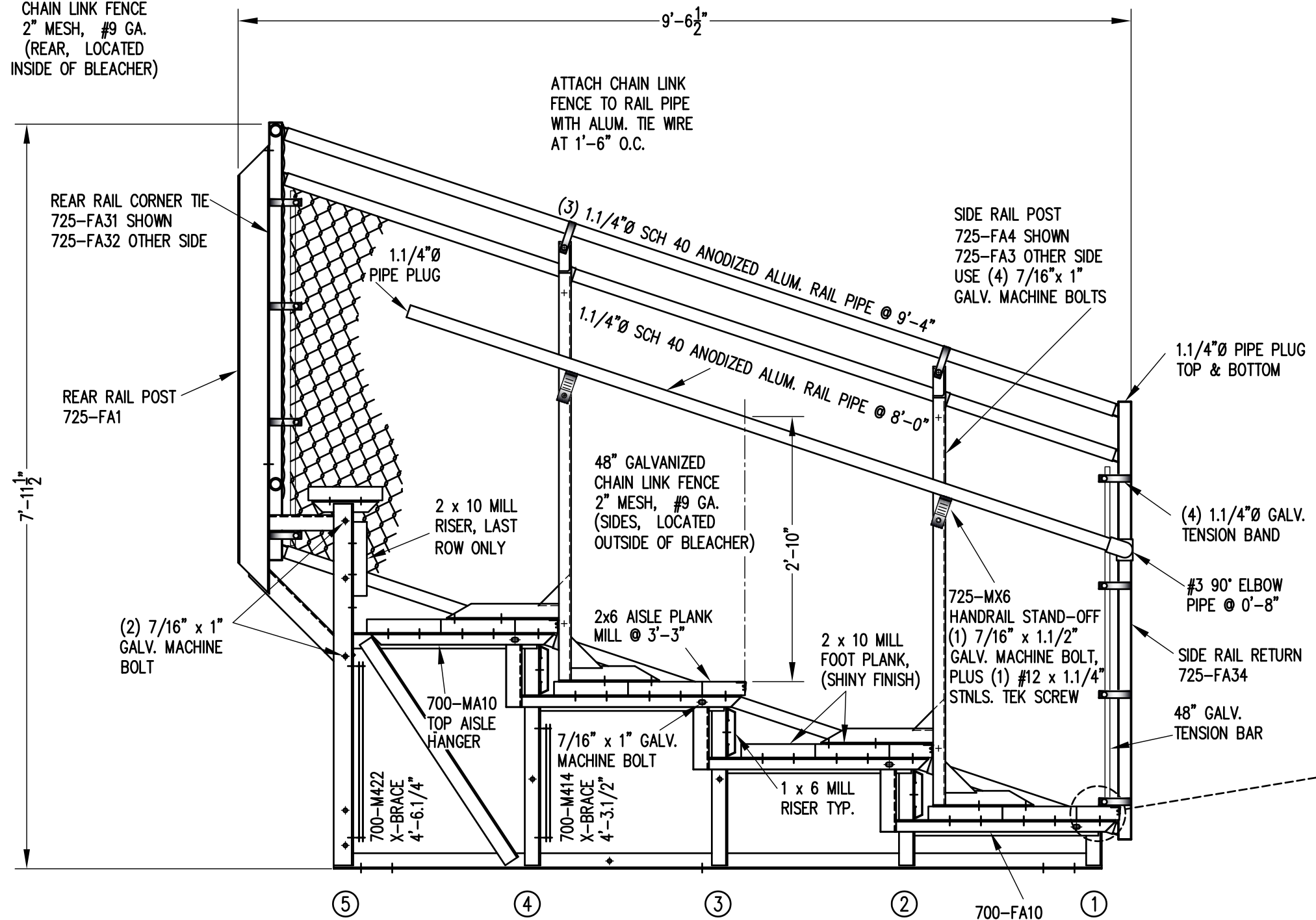
		P.O. BOX 118 GENEVA, ALABAMA 36340 334-684-2296		
		SCALE	AS NOTED	REVISIONS
DATE	11/2/11			
DR'N	CDK	CKD		
AP'VD				
TITLE			NO.	
DLW 5-15 SEATING/FRAMING PLAN W/ END AISLE			784-E2063	



VIEW AA
3/4" = 1'-0"

		Outdoor Aluminum P.O. BOX 118 GENEVA, ALABAMA 36340 334-684-2296		
				SCALE
DATE	11/2/11			
DR'N	ADK CKD			
AP'VD				
TITLE				NO.
DLW 5 ROW VIEW (15'-0" W/ END AISLE)				784-E2085

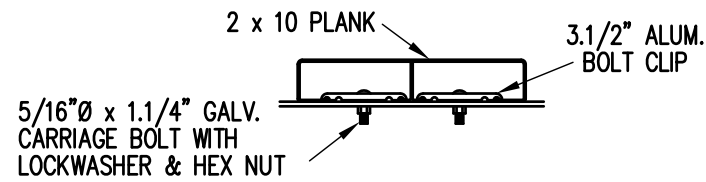
48" GALVANIZED
CHAIN LINK FENCE
2" MESH, #9 GA.
(REAR, LOCATED
INSIDE OF BLEACHER)



NOTE: ALL AISLE HANGERS - TWO PER LOCATION REQUIRED, TYPICAL

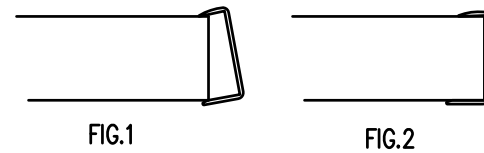
SECTION BB
3/4" = 1'-0"

		P.O. BOX 118 GENEVA, ALABAMA 36340 334-684-2296			
		SCALE	AS NOTED	REVISIONS	BY
DATE	11/2/11				
DR'N	ADK	CKD			
AP'VD					
TITLE				NO.	
DLW 5 ROW SECTION (15'-0" W/ AISLE)				784-E2086	



BOLT CLIP DETAIL

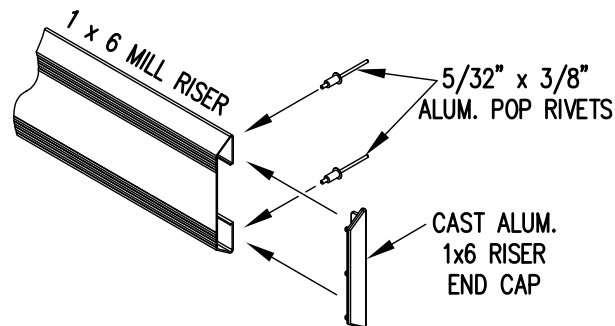
1.1/2" = 1'-0"



- 1) LOCATE THE CHANNEL END CAP AS SHOWN IN FIG. 1.
- 2) TAP END CAP INTO PLACE WITH RUBBER Mallet OR SOFT WOOD. FIG.2
- 3) DRILL 5/32" HOLES THROUGH THE BOTTOM FLANGE AND THE BOTTOM OUTSIDE PLANK FLANGES OF EACH PLANK. INSTALL 5/32" POP RIVETS.

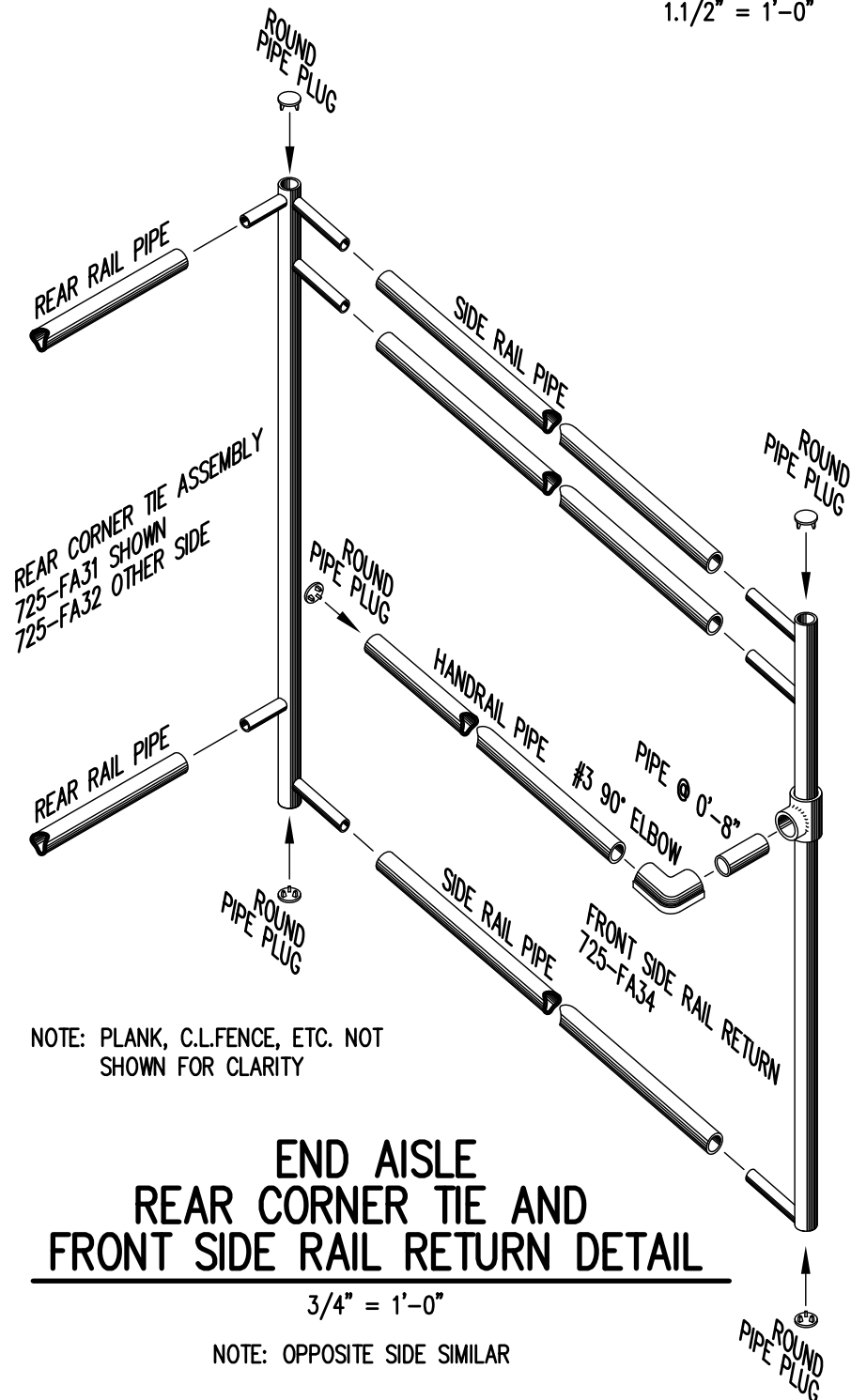
END CAP DETAIL

N.T.S.



1 x 6 RISER END CAP

N.T.S.

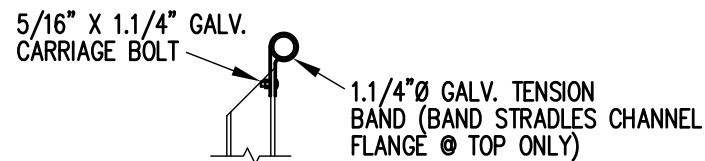


NOTE: PLANK, C.L.FENCE, ETC. NOT SHOWN FOR CLARITY

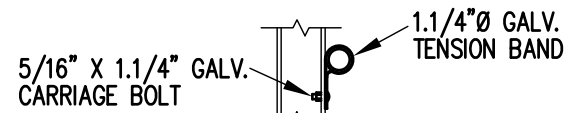
END AISLE REAR CORNER TIE AND FRONT SIDE RAIL RETURN DETAIL

3/4" = 1'-0"

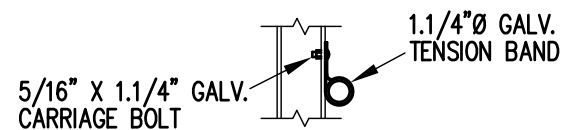
NOTE: OPPOSITE SIDE SIMILAR



TOP RAIL

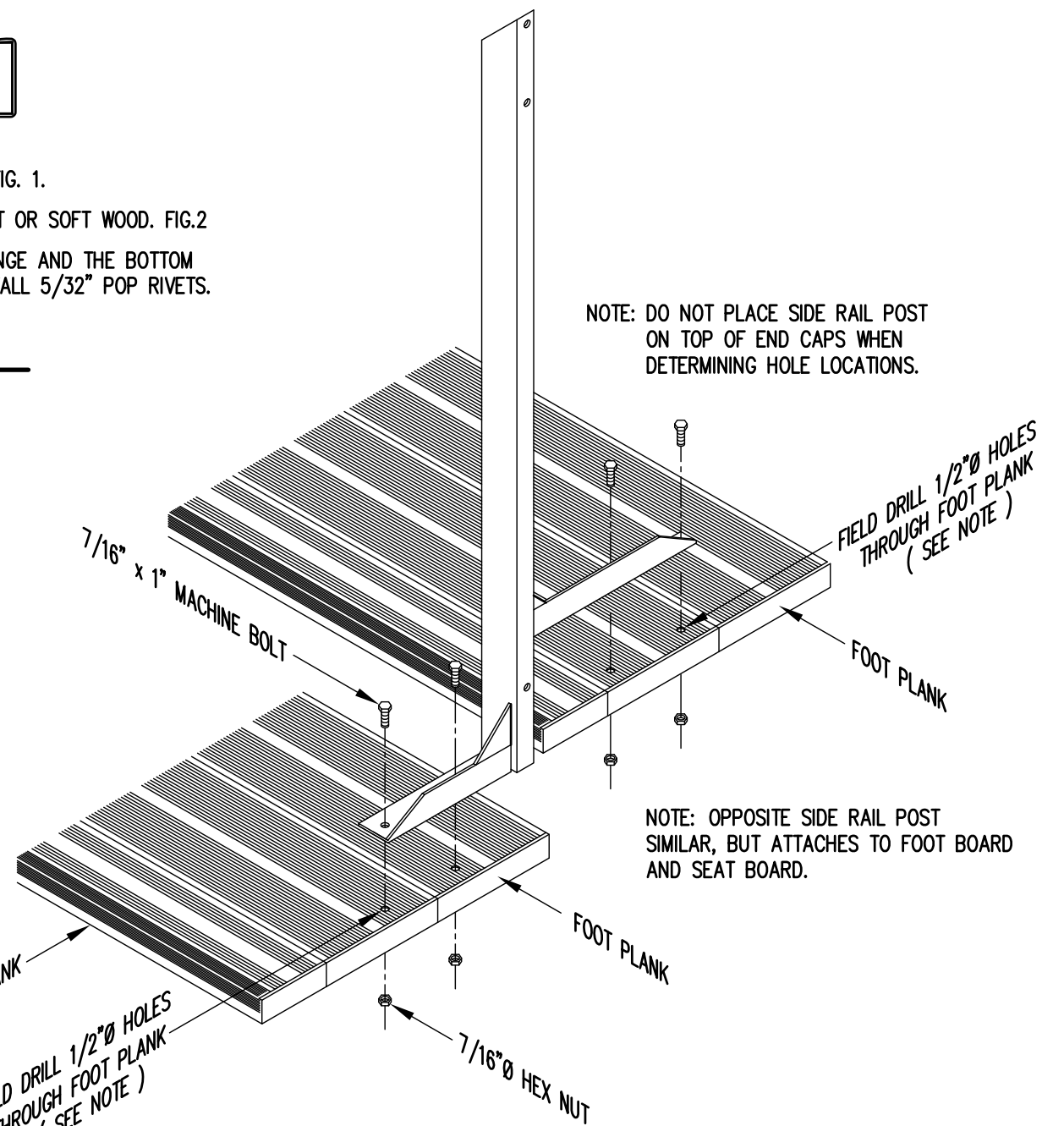


2ND RAIL



BOTTOM RAIL

RAIL PIPE ATTACHMENT



NOTE: DO NOT PLACE SIDE RAIL POST ON TOP OF END CAPS WHEN DETERMINING HOLE LOCATIONS.

NOTE: OPPOSITE SIDE RAIL POST SIMILAR, BUT ATTACHES TO FOOT BOARD AND SEAT BOARD.

TYP. SIDE RAIL POST ATTACHMENT AT END AISLE

1" = 1'-0"

		P.O. BOX 118 GENEVA, ALABAMA 36340 334-684-2296	
		SCALE AS NOTED	REVISIONS
DATE 11/2/11			
DR'N CDK CKD			
AP'VD			
TITLE		NO.	
TYPICAL DETAILS W/ END AISLE		784-E2000	