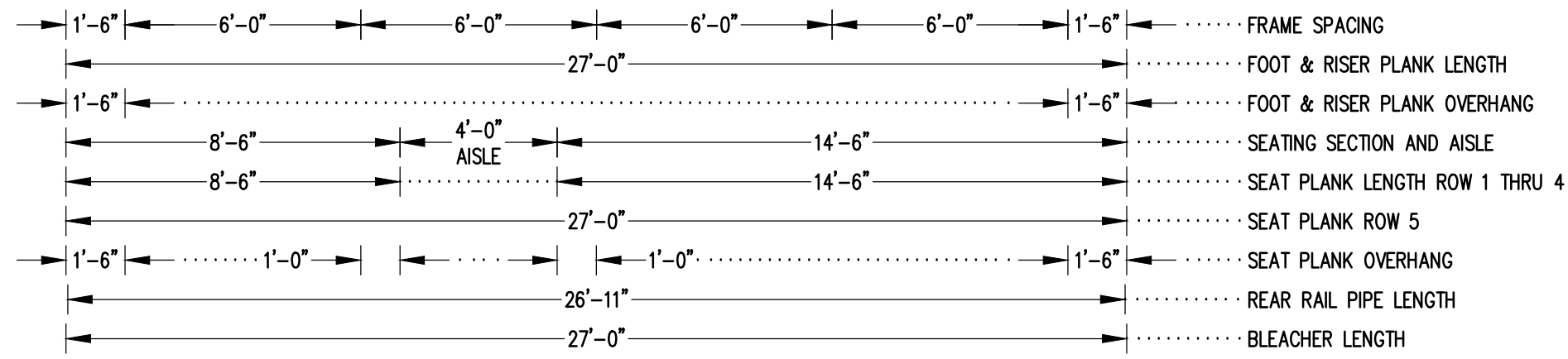
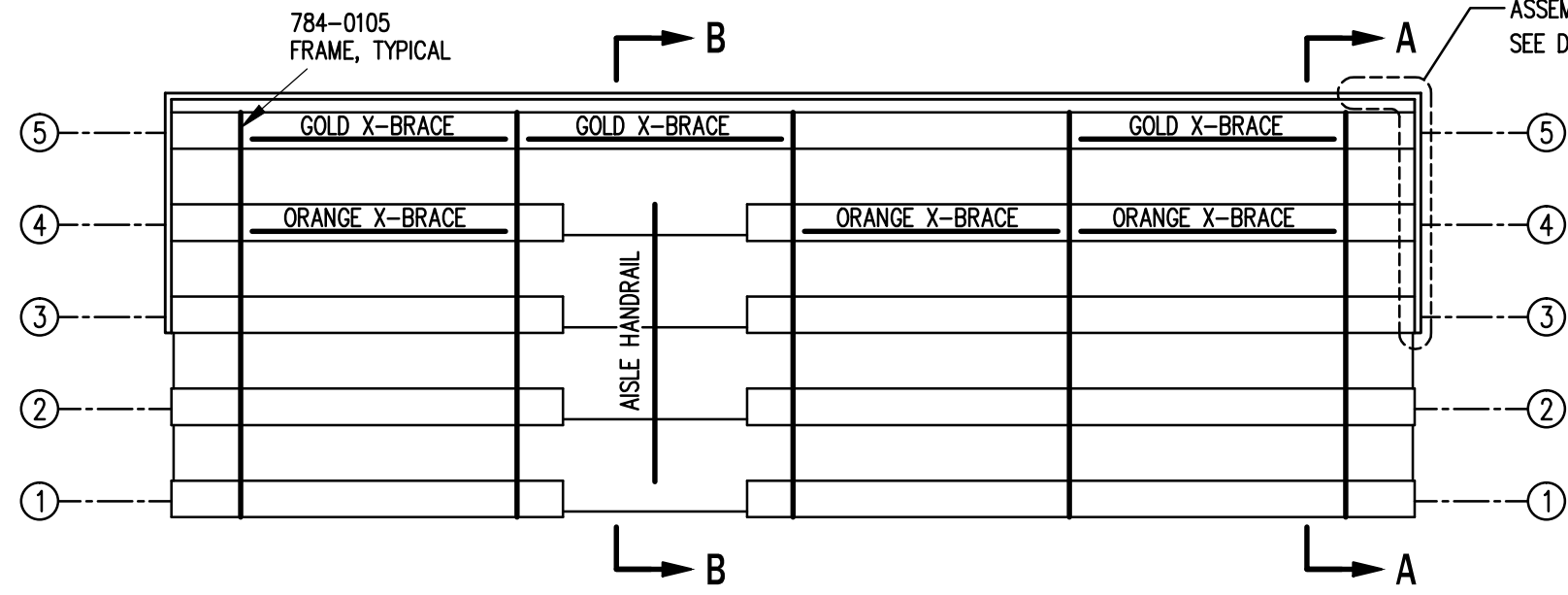


X-BRACE DETAIL

N.T.S.


- 7/16" X 1" GALV. MACH. BOLT
- △ 7/16" X 1.1/2" GALV. MACH. BOLT

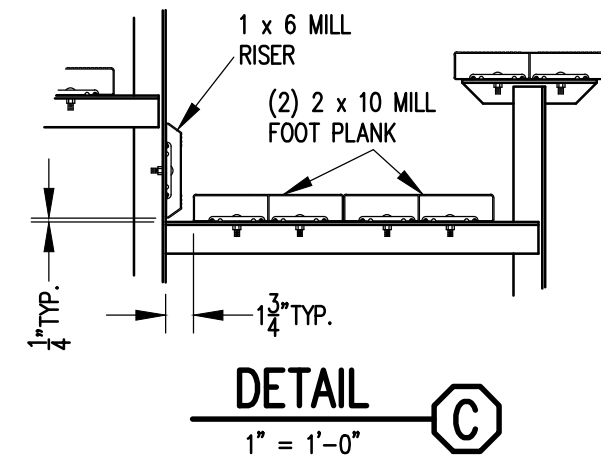
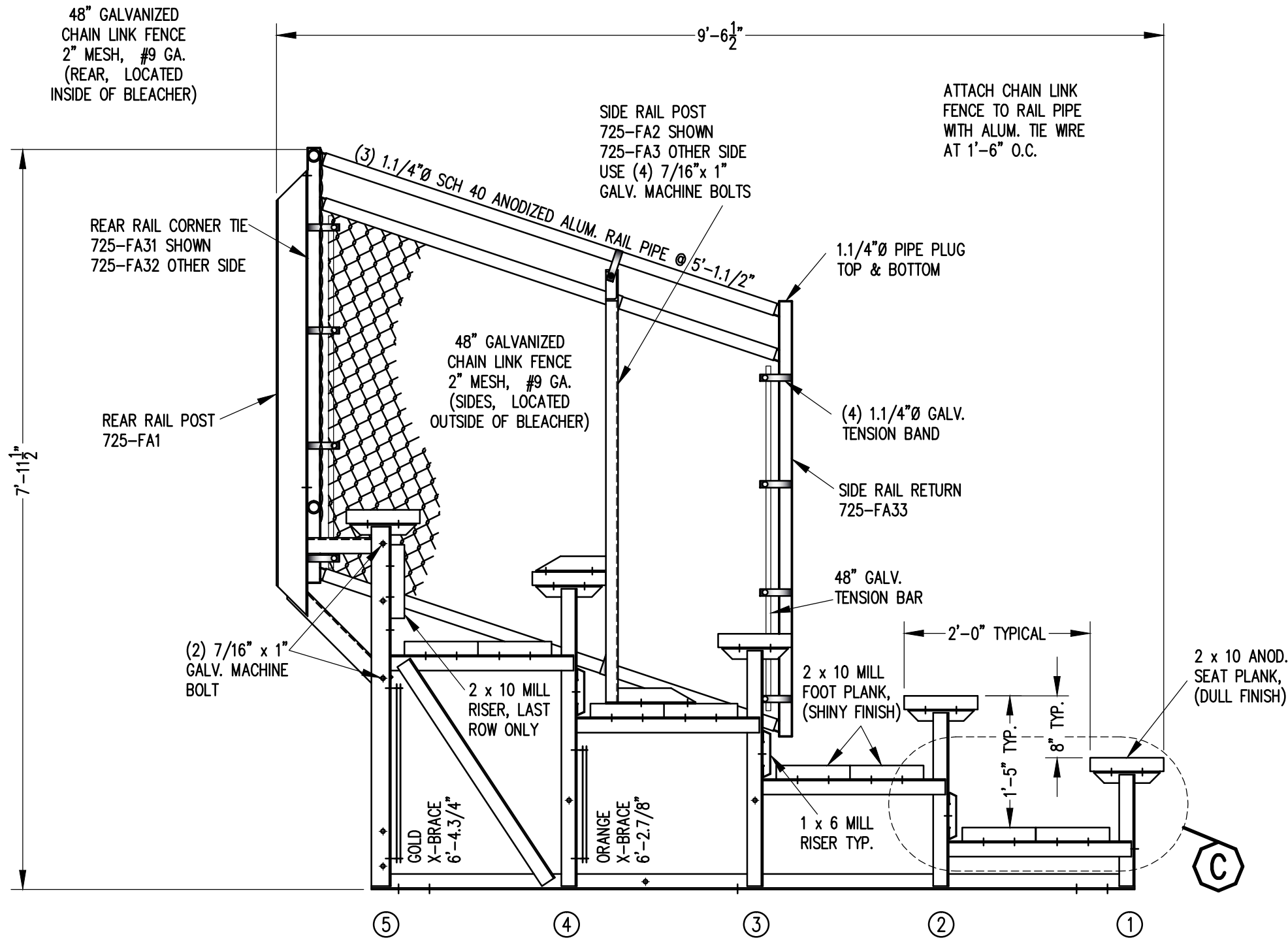
SEE REAR CORNER TIE
ASSEMBLY DETAIL
SEE DWG. 784-E1990




SEATING & FRAMING PLAN

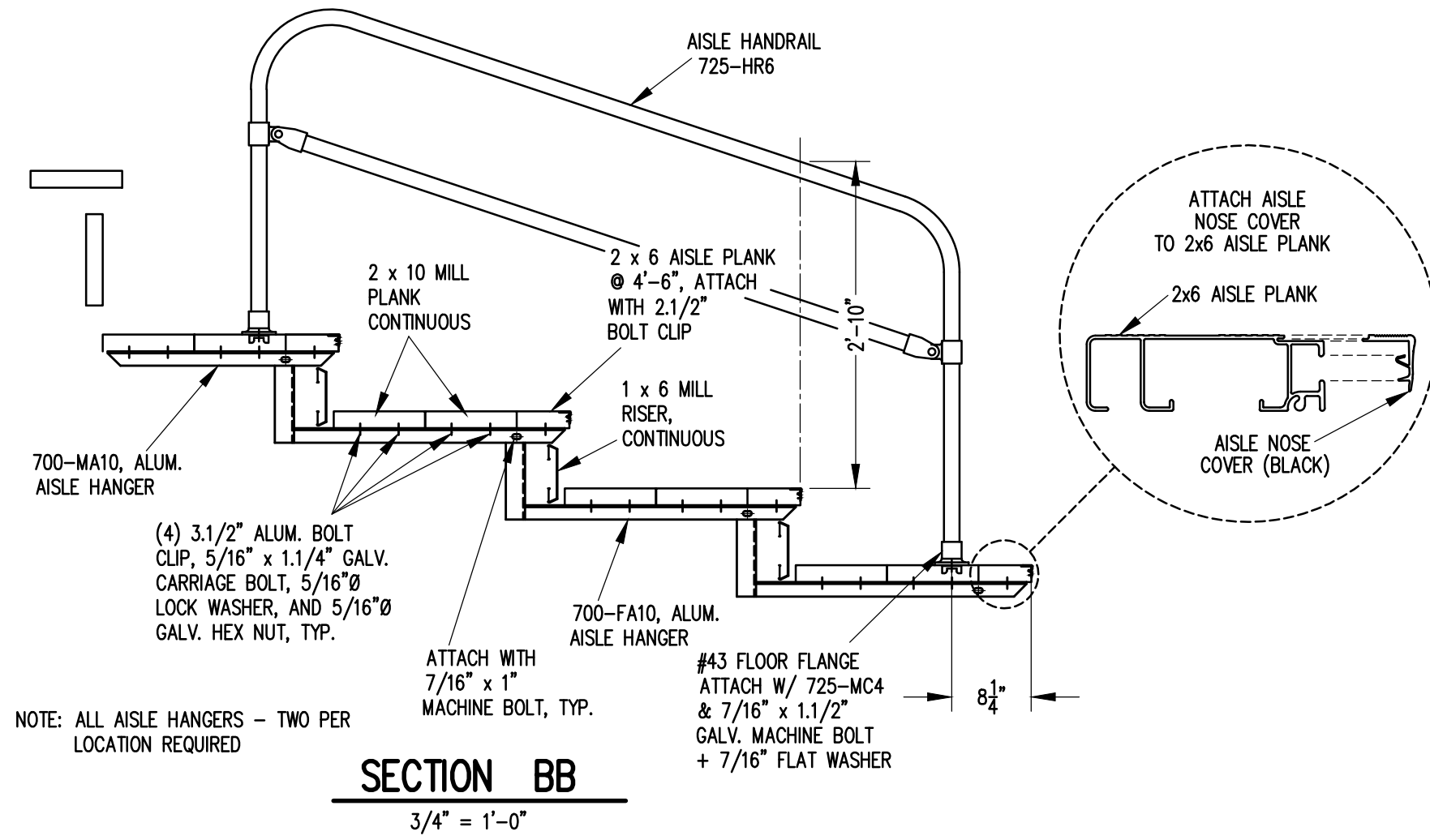
1/4" = 1'-0"
74 NET SEATS @ 18" PER SEAT

		Outdoor Aluminum P.O. BOX 118 GENEVA, ALABAMA 36340 334-684-2296	
DATE 11/2/11			
DR'N GPK CKD			
AP'VD			
TITLE			NO.
DLW 5-27 SEATING/FRAMING PLAN			784-E2073




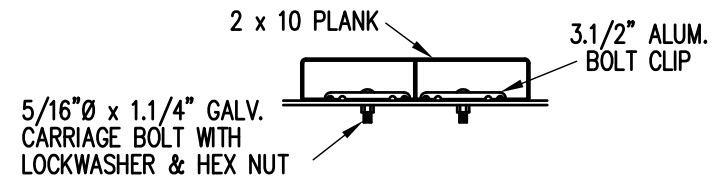
SECTION AA
3/4" = 1'-0"

		Outdoor Aluminum P.O. BOX 118 GENEVA, ALABAMA 36340 334-684-2296	
DATE	11/2/11	REVISIONS	
DR'N	GPK CKD	BY	
AP'VD		DATE	
TITLE			NO.
DLW 5 ROW SECTION			784-E2083



NOTE: ALL AISLE HANGERS - TWO PER LOCATION REQUIRED

		Outdoor Aluminum P.O. BOX 118 GENEVA, ALABAMA 36340 334-684-2296	
SCALE 3/4"=1'-0"			
DATE 11/2/11			
DR'N	CKD		
AP'VD			
TITLE			NO.
DLW 5 ROW AISLE SECTION			784-E1995



BOLT CLIP DETAIL

1.1/2" = 1'-0"



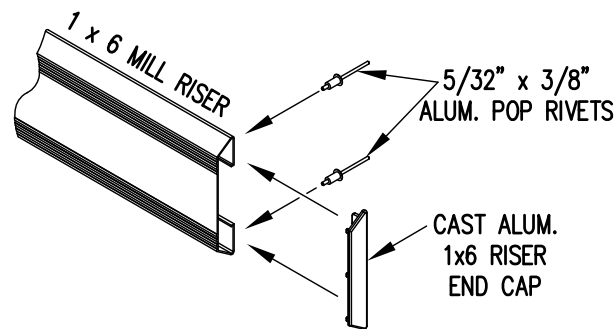
FIG.1

FIG.2

- 1) LOCATE THE CHANNEL END CAP AS SHOWN IN FIG. 1.
- 2) TAP END CAP INTO PLACE WITH RUBBER Mallet OR SOFT WOOD. FIG.2
- 3) DRILL 5/32" HOLES THROUGH THE BOTTOM FLANGE AND THE BOTTOM OUTSIDE PLANK FLANGES OF EACH PLANK. INSTALL 5/32" POP RIVETS.

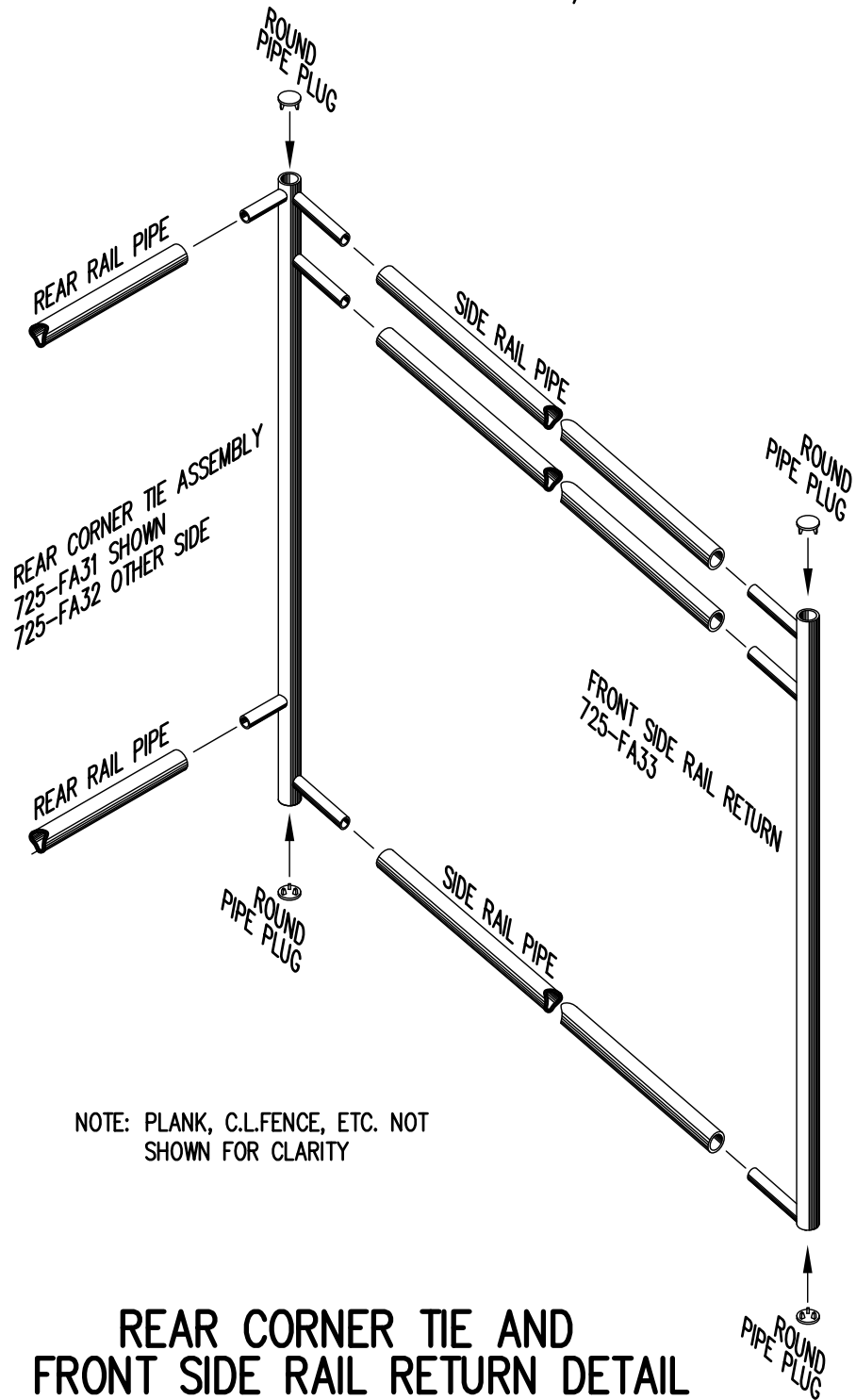
END CAP DETAIL

N.T.S.



1 x 6 RISER END CAP

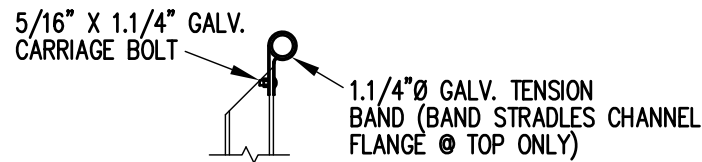
N.T.S.



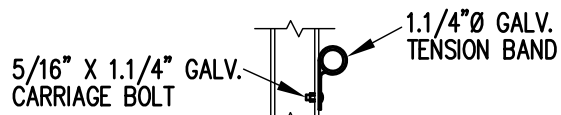
REAR CORNER TIE AND FRONT SIDE RAIL RETURN DETAIL

3/4" = 1'-0"

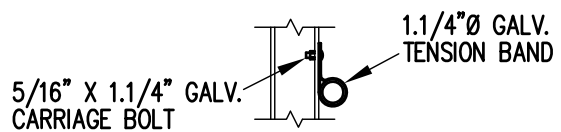
NOTE: PLANK, C.L.FENCE, ETC. NOT SHOWN FOR CLARITY



TOP RAIL

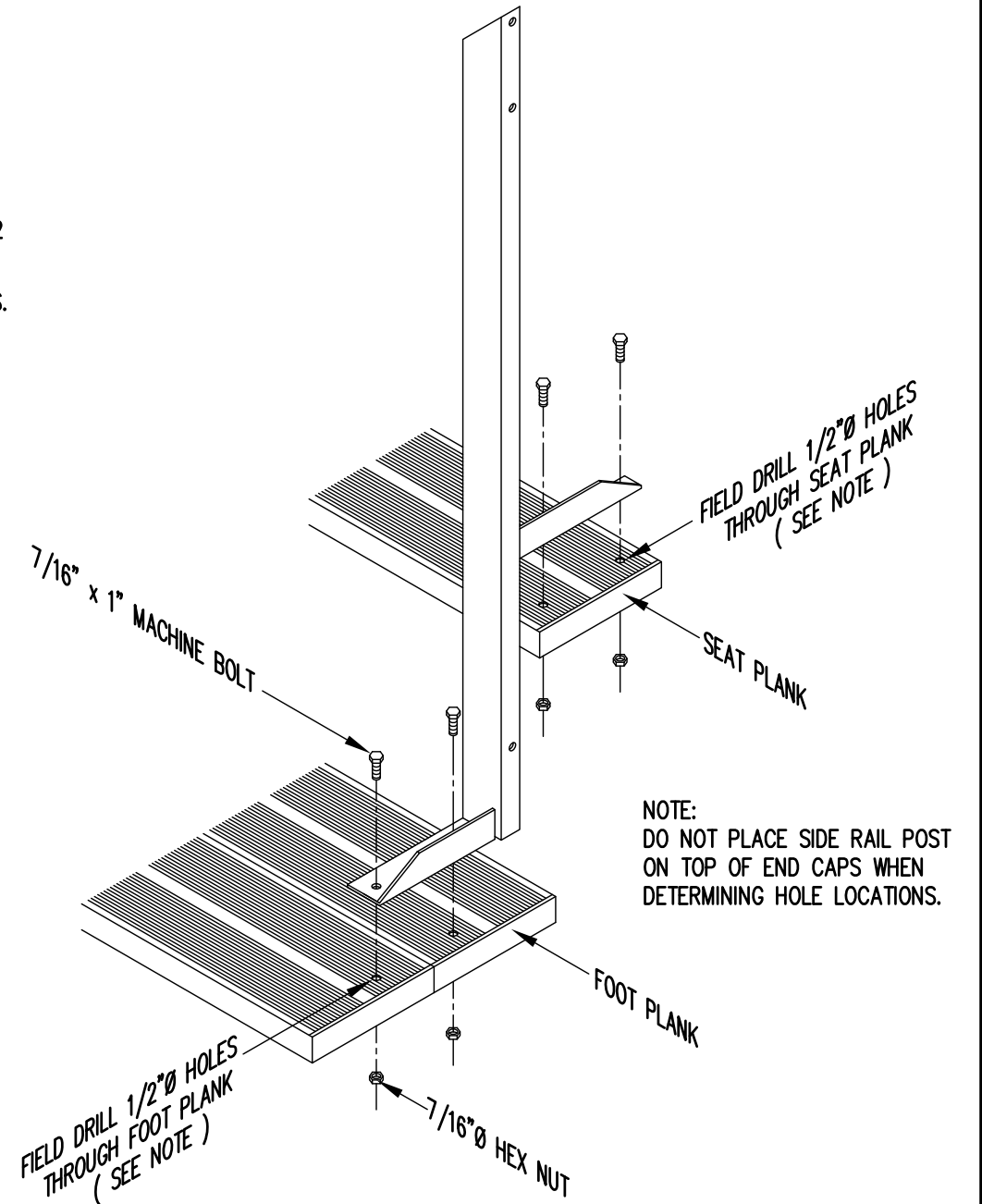


2ND RAIL



BOTTOM RAIL

RAIL PIPE ATTACHMENT



TYP. SIDE RAIL POST ATTACHMENT

1" = 1'-0"

NOTE: DO NOT PLACE SIDE RAIL POST ON TOP OF END CAPS WHEN DETERMINING HOLE LOCATIONS.

		P.O. BOX 118 GENEVA, ALABAMA 36340 334-684-2296			
		SCALE	AS NOTED	REVISIONS	BY
DATE	11/2/11				
DR'N	ADK	CKD			
AP'VD					
TITLE				NO.	
TYPICAL DETAILS				784-E1990	