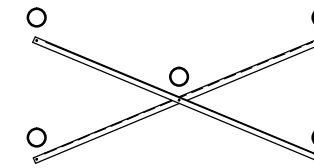


**SEATING PLAN**  
 1/4" = 1'-0"  
 184 NET SEATS @ 18" PER SEAT

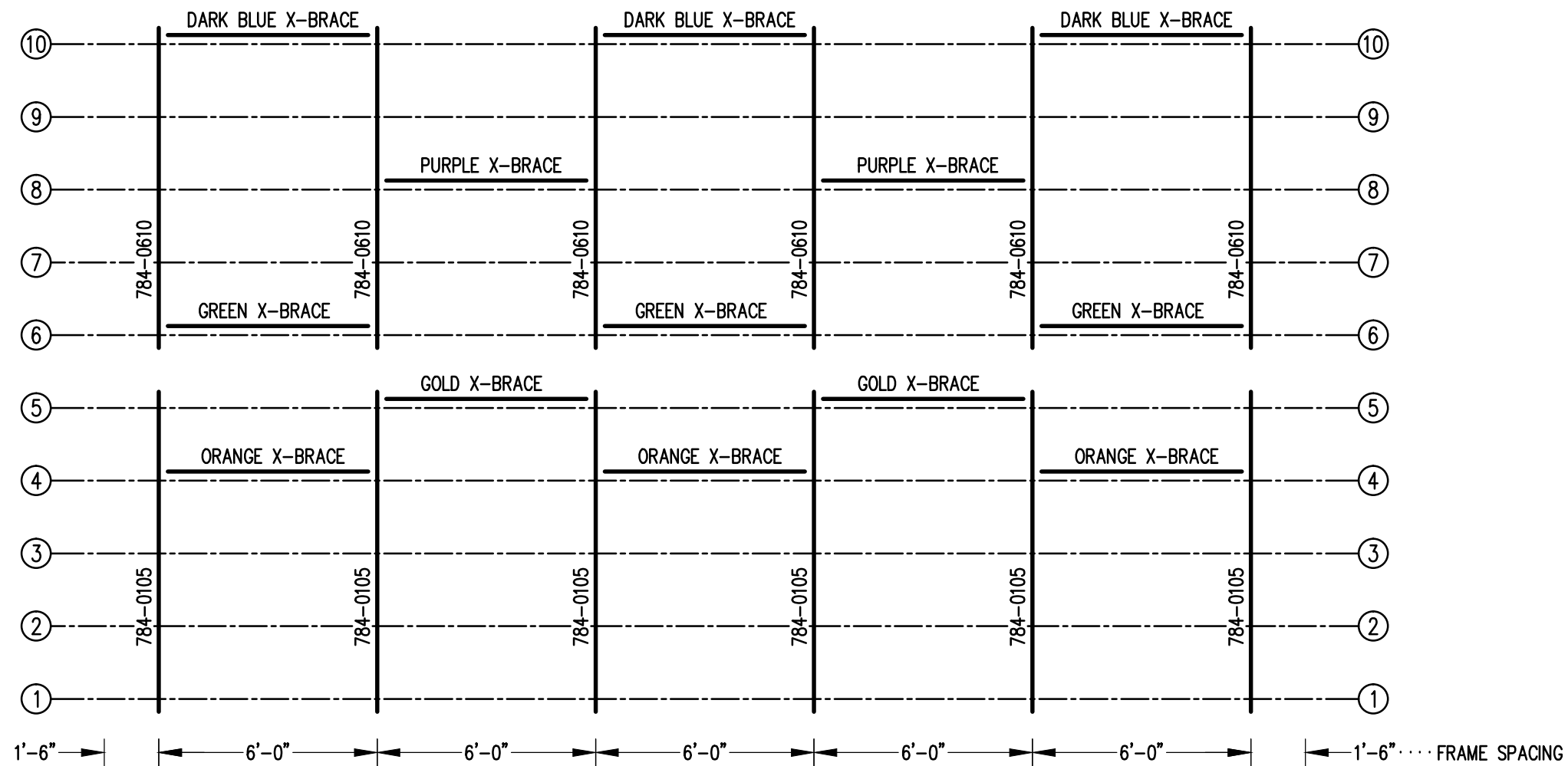
		P.O. BOX 118 GENEVA, ALABAMA 36340 334-684-2296		
		SCALE	AS NOTED	REVISIONS
DATE	11/2/11			
DR'N	CDK	CKD		
AP'VD				
TITLE			NO.	
DLW 10-33 SEATING PLAN			784-E2118	



### X-BRACE DETAIL


N.T.S.

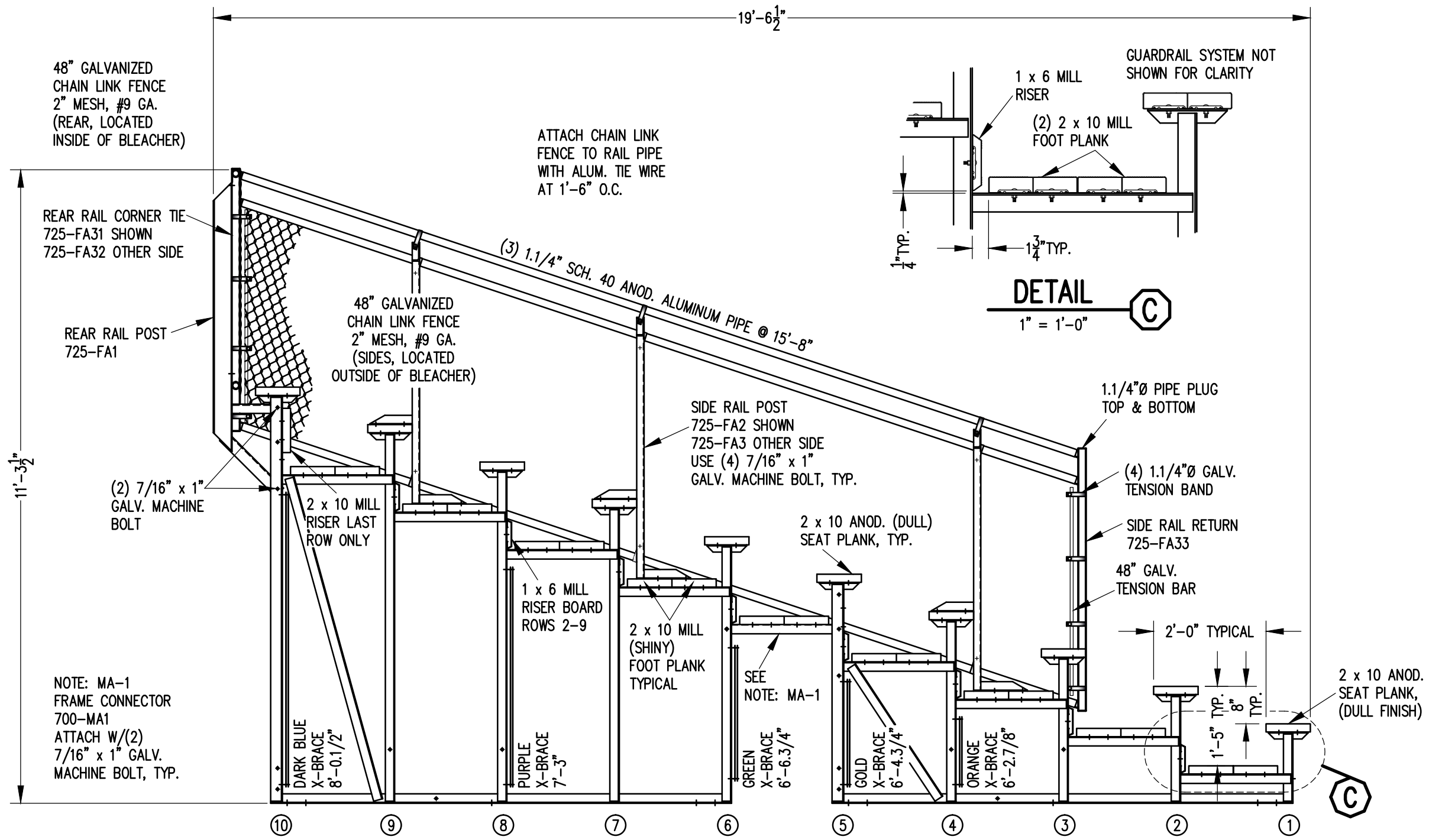
- 7/16" X 1" GALV. MACH. BOLT
- △ 7/16" X 1.1/2" GALV. MACH. BOLT



### FRAMING PLAN


1/4" = 1'-0"

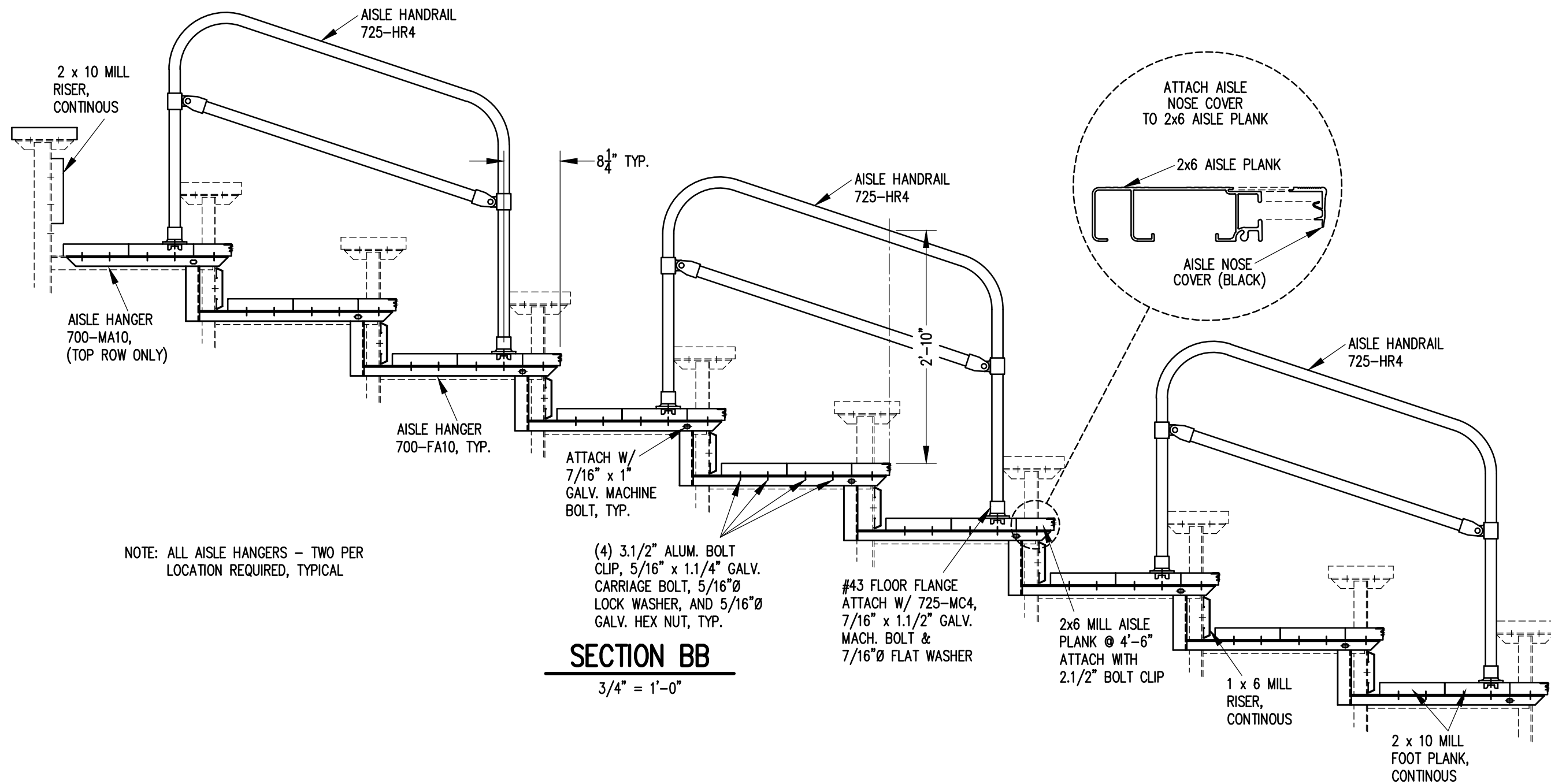
		<b>Outdoor Aluminum</b>		<small>P.O. BOX 118 GENEVA, ALABAMA 36340 334-684-2296</small>	
SCALE	AS NOTED	REVISIONS	BY	DATE	
DATE	11/2/11				
DR'N	CKD				
AP'VD					
TITLE					NO.
DLW 10-33 FRAMING PLAN					<b>784-E2158</b>



**SECTION AA**

1/2" = 1'-0"

		<b>Outdoor Aluminum</b> P.O. BOX 118 GENEVA, ALABAMA 36340 334-684-2296	
DATE 11/2/11			
DR'N CDK	CKD		
AP'VD			
TITLE			NO.
DLW 10 ROW SECTION			<b>784-E2123</b>

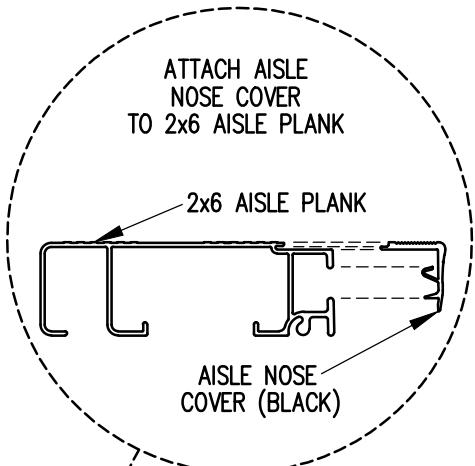



NOTE: ALL AISLE HANGERS - TWO PER LOCATION REQUIRED, TYPICAL

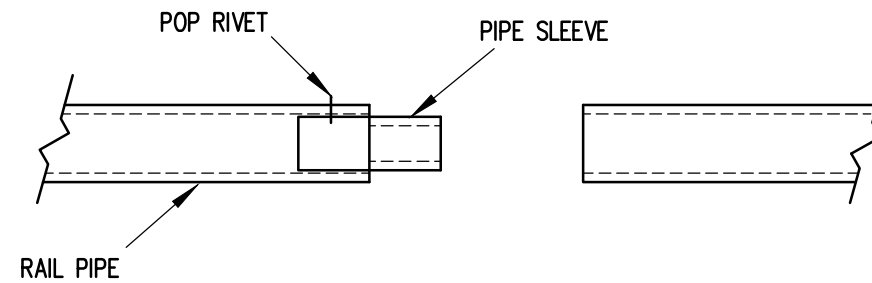
(4) 3.1/2" ALUM. BOLT CLIP, 5/16" x 1.1/4" GALV. CARRIAGE BOLT, 5/16"Ø LOCK WASHER, AND 5/16"Ø GALV. HEX NUT, TYP.

**SECTION BB**

3/4" = 1'-0"



		<b>Outdoor Aluminum</b> P.O. BOX 118 GENEVA, ALABAMA 36340 334-684-2296	
SCALE 3/4"=1'-0"			
DATE 11/2/11			
DR'N	CKD		
AP'VD			
TITLE			NO.
DLW 10 ROW AISLE SECTION			784-E1996

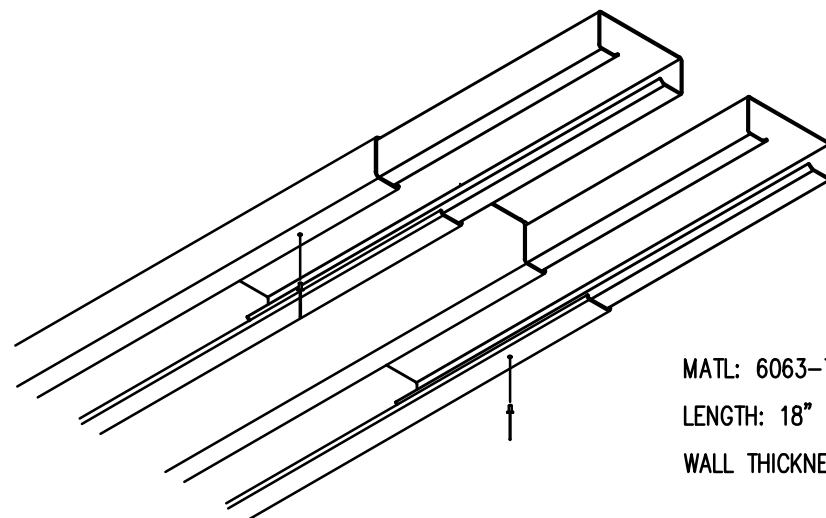


### PIPE SLEEVE ASSEMBLY

1.1/2" = 1' 0"

- 1) INSERT PIPE SLEEVE APPROXIMATELY HALFWAY INTO THE RAIL PIPE. FASTEN PIPE SLEEVE WITH (1) ALUMINUM POP RIVET (5/32" X 5/8")
- 2) SLIDE THE END OF THE ADJOINING RAILPIPE OVER THE PIPE SLEEVE UNTIL THE TWO RAILS ARE FLUSH.

NOTE: PIPE SLEEVES SHOULD BE ATTACHED ON ONLY ONE END TO ALLOW FOR EXPANSION.




MATL: 6063-T6 ALUMN.  
 LENGTH: 18"  
 WALL THICKNESS: .062"

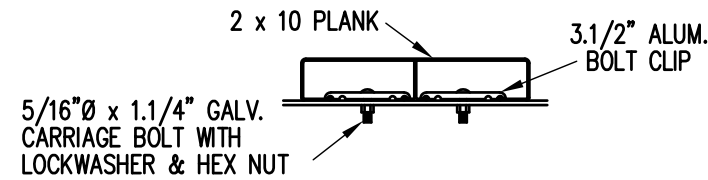
### PLANK SPLICE SLEEVE ASSEMBLY

(TYP. @ ALL PLANK SPLICES)

- 1) INSERT SLEEVES APPROXIMATELY HALFWAY INTO THE PLANK WITH THE ENDS STAGGERED ABOUT 1/2". FASTEN SLEEVE WITH (1) ALUMINUM POP RIVET.
- 2) SLIDE THE END OF THE ADJOINING PLANK OVER THE SLEEVES UNTIL THE TWO PLANKS ARE SNUG.

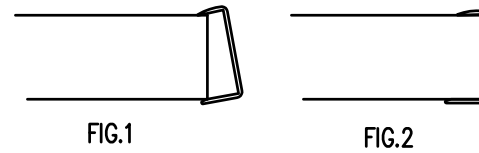
NOTE: SLEEVES SHOULD BE ATTACHED ON ONLY ONE END TO ALLOW FOR EXPANSION.

		<b>Outdoor Aluminum</b> <small>P.O. BOX 118        GENEVA, ALABAMA 36340        334-684-2296</small>	
DATE <b>11/2/11</b>			
DR'N <i>CDK</i>	CKD		
AP'VD			
TITLE <b>SPLICE SLEEVE ASSEMBLY</b>			NO. <b>784-E1994</b>



**BOLT CLIP DETAIL**

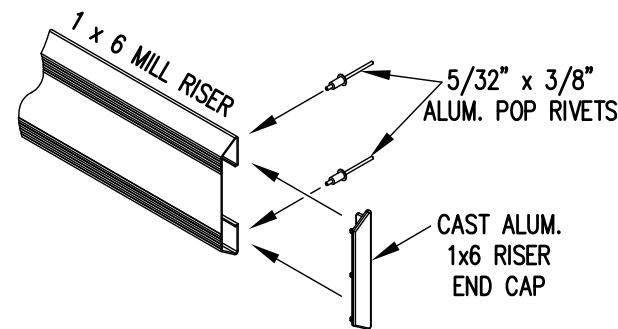
1.1/2" = 1'-0"



- 1) LOCATE THE CHANNEL END CAP AS SHOWN IN FIG. 1.
- 2) TAP END CAP INTO PLACE WITH RUBBER Mallet OR SOFT WOOD. FIG.2
- 3) DRILL 5/32" HOLES THROUGH THE BOTTOM FLANGE AND THE BOTTOM OUTSIDE PLANK FLANGES OF EACH PLANK. INSTALL 5/32" POP RIVETS.

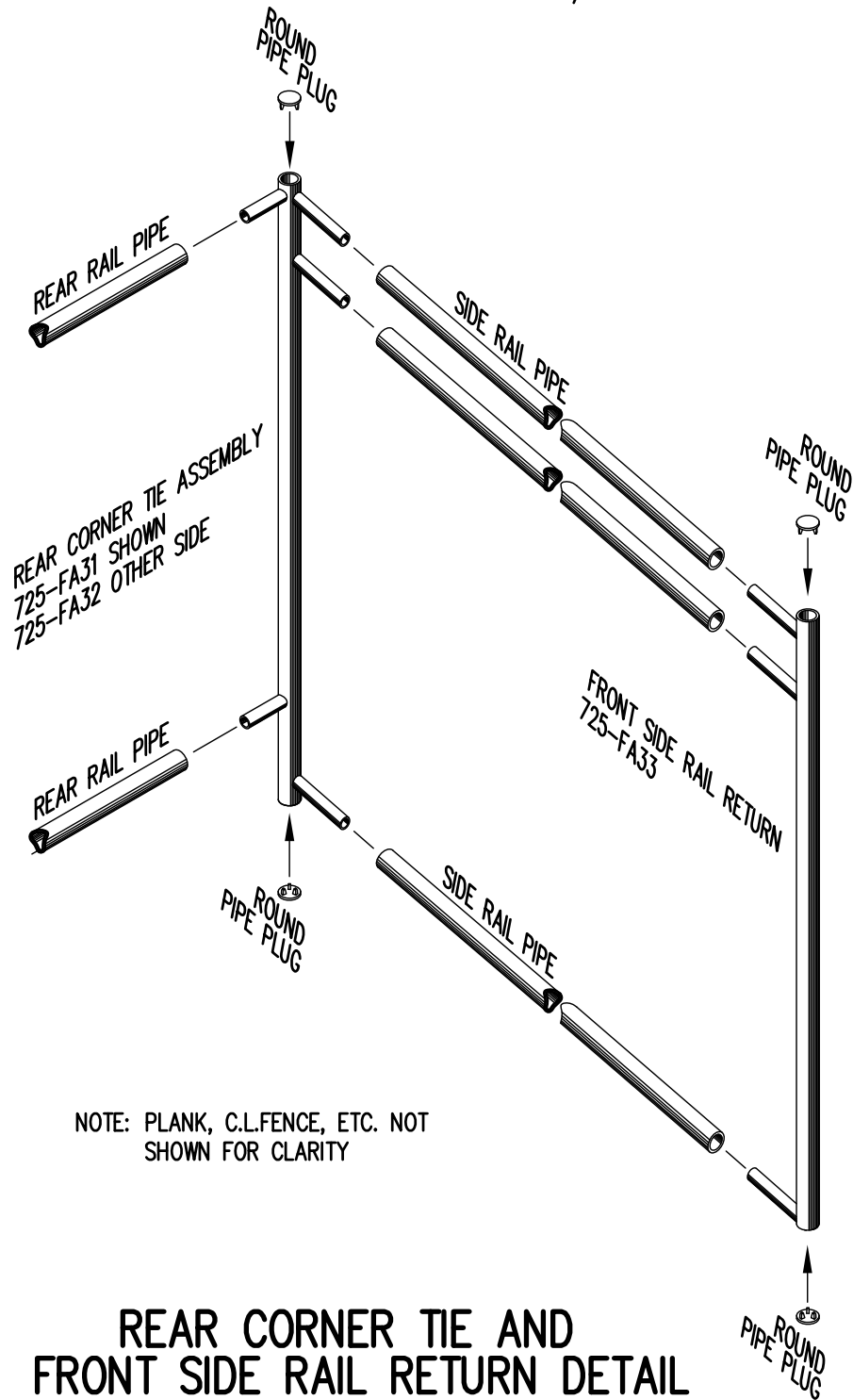
**END CAP DETAIL**

N.T.S.



**1 x 6 RISER END CAP**

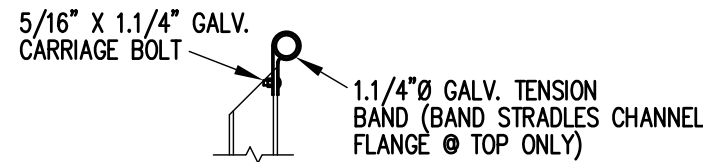
N.T.S.



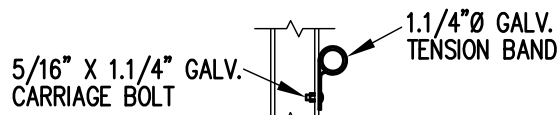
**REAR CORNER TIE AND FRONT SIDE RAIL RETURN DETAIL**

3/4" = 1'-0"

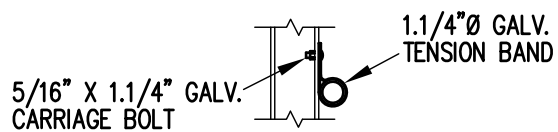
NOTE: PLANK, C.L.FENCE, ETC. NOT SHOWN FOR CLARITY



**TOP RAIL**

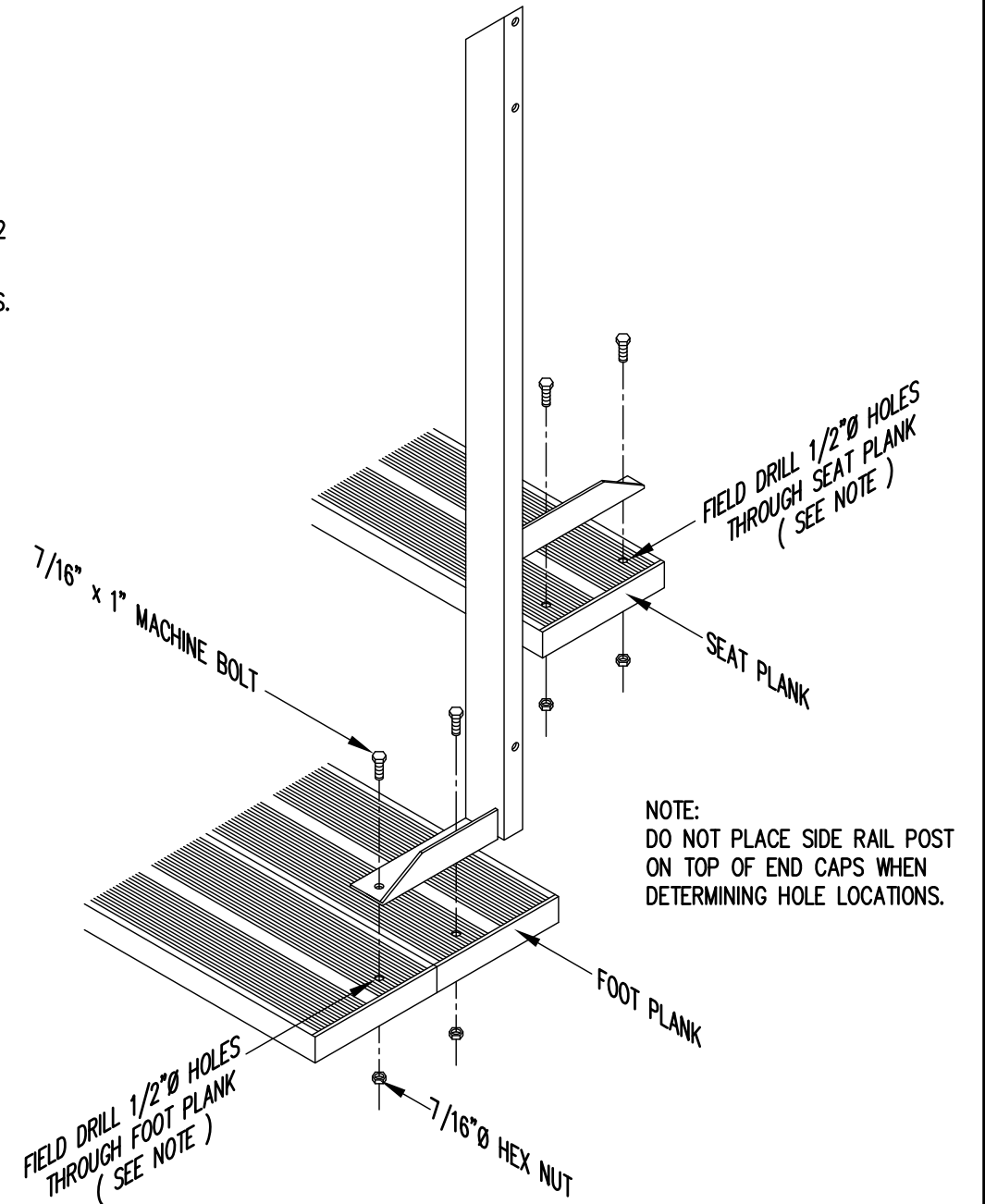


**2ND RAIL**



**BOTTOM RAIL**

**RAIL PIPE ATTACHMENT**



**TYP. SIDE RAIL POST ATTACHMENT**

1" = 1'-0"

NOTE: DO NOT PLACE SIDE RAIL POST ON TOP OF END CAPS WHEN DETERMINING HOLE LOCATIONS.

		P.O. BOX 118 GENEVA, ALABAMA 36340 334-684-2296			
		SCALE	AS NOTED	REVISIONS	BY
DATE	11/2/11				
DR'N	ADK	CKD			
AP'VD					
TITLE				NO.	
TYPICAL DETAILS				784-E1990	