

REVISION	DATE	PORTER [®] No.
RJM	10-11-94	
Remove Temp. Framing Notes	10-1-00	CUSTOMER No.
© COPYRIGHT 1998 PORTER ATHLETIC EQUIPMENT CO. ALL RIGHTS RESERVED	DATE	
	5-1-1993	

00870-100 and 00870-200
FLOOR SLEEVES FOR 3-1/2" DIA. POST
WITH 5" DIA. COVER

THIS PRINT IS THE PROPERTY OF PORTER ATHLETIC EQUIPMENT COMPANY AND MAY NOT BE REPRODUCED WITHOUT WRITTEN PERMISSION

PORTER[®]
It's What the Pros Play On![®]

WORLD LEADER
IN QUALITY SPORTS EQUIPMENT

2500 S. 25th AVENUE, P.O. BOX 2500
 BROADVIEW, ILLINOIS 60155-2500

DRAWING BY	DR
CHECKED BY	GS
PAGE No.	G-870

IMPORTANT NOTE
 SEE INSTRUCTIONS PACKED WITH SLEEVE FOR PROPER INSTALLATION

5" DIA. CHROME OR BRASS PLATED REMOVABLE COVER PLATE

IMPORTANT NOTE
 1/2" (HOLD) - TOP OF SLEEVE TO FINISHED FLOOR ELEVATION

FINISHED FLOOR

CONCRETE SUB FLOOR

NON-SHRINK GROUT FILL

MINIMUM CORE DIA. *

3-1/2" DIA. UPRIGHT

5-1/4" DIA.

4-1/4" DIA.

3-3/4" O.D.

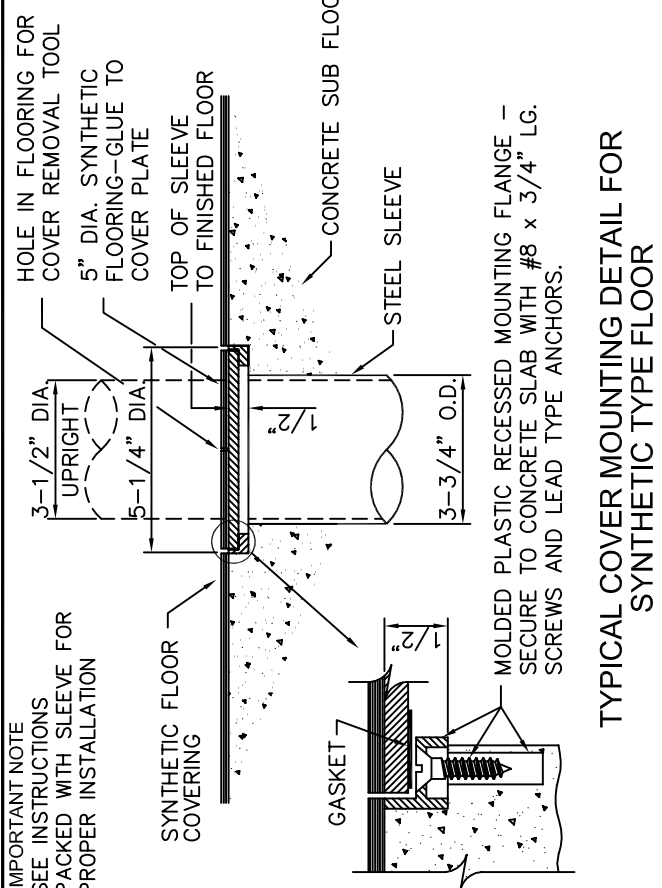
5"

1/2"

GASKET

MOLDED PLASTIC RECESSED MOUNTING FLANGE - SECURE TO FLOOR WITH #8 x 3/4" LG. FLATHEAD SCREWS.

TYPICAL COVER MOUNTING DETAIL IN WOOD FLOOR



IMPORTANT NOTE
 SEE INSTRUCTIONS PACKED WITH SLEEVE FOR PROPER INSTALLATION

HOLE IN FLOORING FOR COVER REMOVAL TOOL

5" DIA. SYNTHETIC FLOORING-GLUE TO COVER PLATE

TOP OF SLEEVE TO FINISHED FLOOR

CONCRETE SUB FLOOR

STEEL SLEEVE

3-1/2" DIA. UPRIGHT

5-1/4" DIA.

3-3/4" O.D.

5"

1/2"

GASKET

MOLDED PLASTIC RECESSED MOUNTING FLANGE - SECURE TO CONCRETE SLAB WITH #8 x 3/4" LG. SCREWS AND LEAD TYPE ANCHORS.

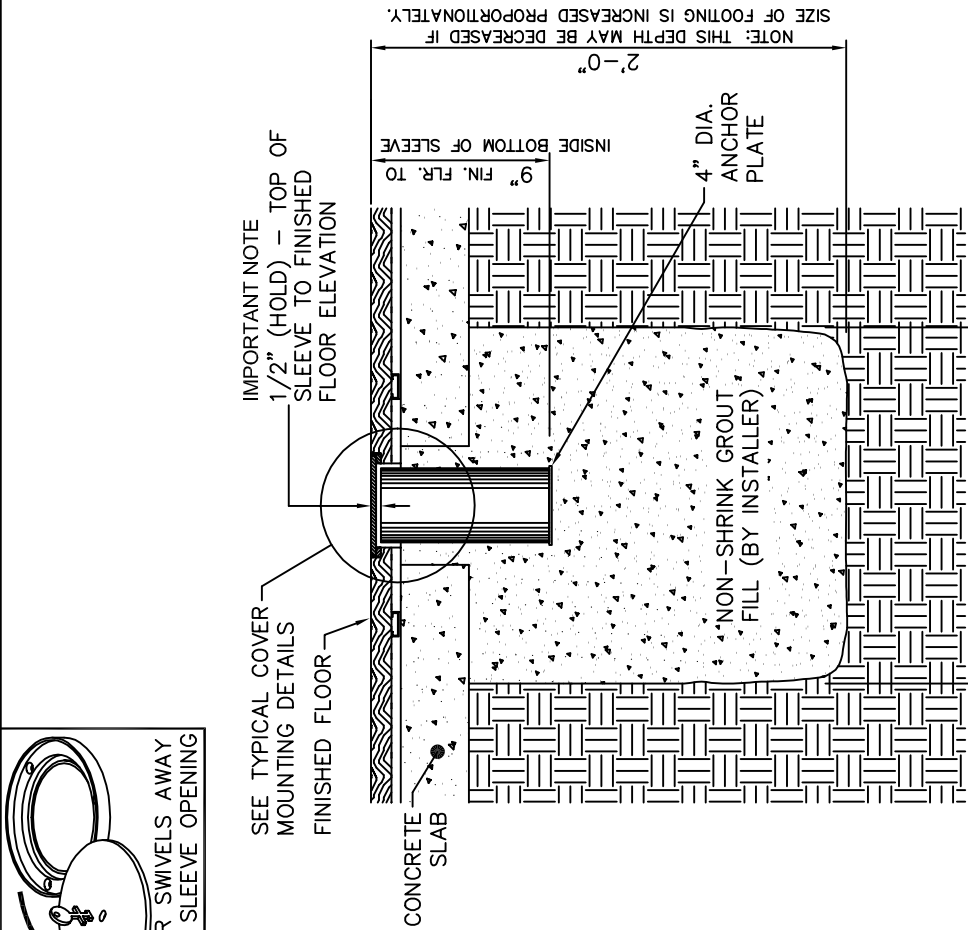
TYPICAL COVER MOUNTING DETAIL FOR SYNTHETIC TYPE FLOOR

INDICATE QUANTITY OF FLOOR SLEEVES REQ'D

00870-100 FLOOR SLEEVE WITH CHROME COVER PLATE

00870-200 FLOOR SLEEVE WITH BRASS COVER PLATE

SELECT COVER: 00870-100 00870-200



IMPORTANT NOTE
 1/2" (HOLD) - TOP OF SLEEVE TO FINISHED FLOOR ELEVATION

SEE TYPICAL COVER MOUNTING DETAILS FINISHED FLOOR

CONCRETE SLAB

4" DIA. ANCHOR PLATE

NON-SHRINK GROUT FILL (BY INSTALLER)

1'-6" + FOOTING SIZE

TYPICAL INSTALLATION DETAIL

NOTE: THIS DEPTH MAY BE DECREASED IF SIZE OF FOOTING IS INCREASED PROPORTIONATELY.

INSTALLATION OPTIONS (NOTE - SLEEVE SHOULD BE INSTALLED IN SLAB BEFORE FINISHED FLOOR IS IN PLACE. IF FINISHED FLOOR IS IN PLACE, USE FLOOR SLEEVE WITH 8" COVER - SEE PAGE G-772 OR G-872).

* 1. LOCATE AND CORE 5" MINIMUM DIA. HOLES IN SLAB AND GROUT SLEEVES IN PLACE PER DETAIL ABOVE. CAUTION - BEFORE CORING HOLES IN EXISTING CONCRETE SLAB, CHECK FOR LOCATIONS OF ELECTRICAL CONDUIT OR PIPE.

2. LOCATE SLEEVES AND POUR IN PLACE IN CONCRETE SLAB. COMPLETE INSTALLATION INSTRUCTIONS ARE INCLUDED WITH FLOOR SLEEVE.

SPECIFICATIONS

PORTER No. 00870-100 GYMNASIUM FLOOR SLEEVE WITH CHROME COVER FOR 3-1/2" (8.9cm) O.D. VOLLEYBALL AND TENNIS STANDARDS

Sleeve shall be cast in concrete footing before concrete slab is poured. (For installation in existing floors, specify the use of No. 00872-100 or 00872-200 sleeve.) Top of sleeve to be installed 1/2" (1.3cm) below finished floor elevation.

Chrome plated cover plate assembly shall be provided for use in either synthetic or wood floors. Cover plate shall consist of molded plastic recessed mounting flange, cork gasket and a 5" (12.7cm) diameter chrome plated cover. Cover shall be equipped with a swivel type retainer pin to prevent theft. Special key shall be provided for cover removal.

Sleeve assembly shall be 3-3/4" (9.5cm) O.D. heavy wall steel tubing extending 9" (22.9cm) into concrete footing. Bottom of sleeve shall be capped with a 4" (10.2cm) diameter steel disc to provide proper anchorage in footing. Sleeve assembly to be finished in a rust resistant enamel finish.

PORTER No. 00870-200 GYMNASIUM FLOOR SLEEVE WITH BRASS COVER FOR 3-1/2" (8.9cm) O.D. VOLLEYBALL AND TENNIS STANDARDS

Same specification as No. 00870-100 above, except that cover plate is brass plated.